

How to Order Parts

All of our parts get ordered through Quartzy. Quartzy is an inventory software that keeps all of our orders in one location. Please ask us to get you an account if you don't have one yet.

For normal parts (i.e. stuff of Amazon), make sure you have the URL of the page for it and possibly the part number. Please enter the exact price listed on the page.

For OSHPark orders, once you have uploaded your documents to the OSHPark website, go to your projects, and share the project. Get a permalink for the project and use it to when submitting your order on Quartzy.

Your Current Projects

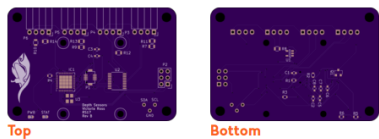
depthSensorBoard.kicad_pcb

2 layer board of 2.63 x 1.76 inches (66.7 x 44.6 mm).
Shared on February 14th, 2018 23:18
Uploaded on February 14th, 2018 23:14.

Previous orders:

- February 14th, 2018 (RECEIVED) [View order](#)

depth sensor board



[Delete](#) [Edit](#) [Stop Sharing](#) [Permalink](#) [Embed Link](#) [Order Board](#)

For Digikey Orders, click “share cart” and copy the link given by Digikey. Use that link when submitting a purchase order on Quartzy.

Quantity	Part Number	Customer Reference
<input type="text"/>	<input type="text"/>	<input type="text"/>
Add to Cart		

Index	Quantity	Image	Part Number	Description	Customer Reference	Available Quantity	Backorder Quantity	Unit Price	Extended Price
1	16		311-100K-BCT-ND	RES SMD 100K OHM 1% 18W 0805	R1 R2 R3 R4 R5 R6 R7 R8 R9	16	Immediate	0.02200	\$0.35
2	1		AP2210K-3.3TRG100CT-ND	IC REG LINEAR 3.3V 300mA SOT23-5	U1	1	Immediate	0.42000	\$0.42
3	10		211-1395-1-ND	CAP CER 1UF 16V X7R 0805	C1	10	Immediate	0.07900	\$0.79
4	10		1276-2087-1-ND	CAP CER 4.7UF 6.3V X7R 0603	C9	10	Immediate	0.09990	\$0.99
5	1		296-15777-1-ND	TRANS IGBT DARL 50V 0.5A 1850	IC1	1	Immediate	1.53000	\$1.53
6	10		160-1446-1-ND	LED GREEN CLEAR 0603 SMD	D9 D10	10	Immediate	0.21100	\$2.11
7	3		567-1293-1-ND	CAP CER 2.2UF 16V X5R 0805	C3	3	Immediate	0.16000	\$0.48
8	1		5ER4070C1-ND	CRYSTAL 16.00 MHZ 9PF SMD	U2	1	Immediate	0.56000	\$0.56

Input

New Cart - create a new empty cart

Fast Add - bulk add multiple part numbers to your cart

Add Cart - add previous carts

Add BOM - add existing BOMs

Add Quote - add previous Quotes

Resume Cart - resume a previous cart

Upload to Cart - upload a file, csv, txt, xls, vtex

[Upload to Cart](#)

Options

Update Stock Status - refresh the quantity available

Output

Download - save a copy of your cart in spreadsheet format

Cart Share - create a new cart including only the quantity, part number, and customer reference

[Cart Share](#)

From:

<https://robosub.eecs.wsu.edu/wiki/> - **Palouse RoboSub Technical Documentation**

Permanent link:

<https://robosub.eecs.wsu.edu/wiki/ee/partsordering?rev=1518651282>

Last update: **2018/02/14 15:34**