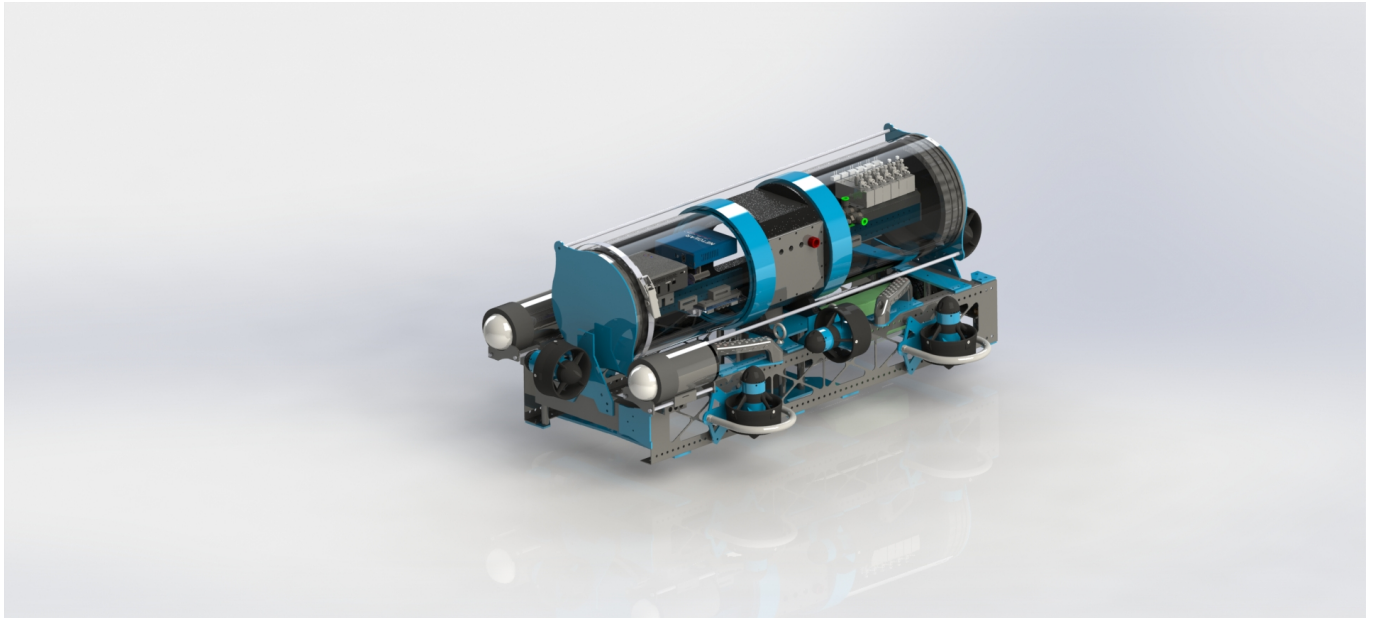


Mechanical Engineering

Welcome to the Mechanical Engineering Page!

The goal of this Wiki is to be the primary hub for everything mechanical related to the AUV, from instructions on O-rings to Solidworks Drawing standards for our team.



From:

<https://robosub.eecs.wsu.edu/wiki/> - **Palouse RoboSub Technical Documentation**

Permanent link:

<https://robosub.eecs.wsu.edu/wiki/me/start?rev=1473016416>



Last update: **2016/09/04 12:13**