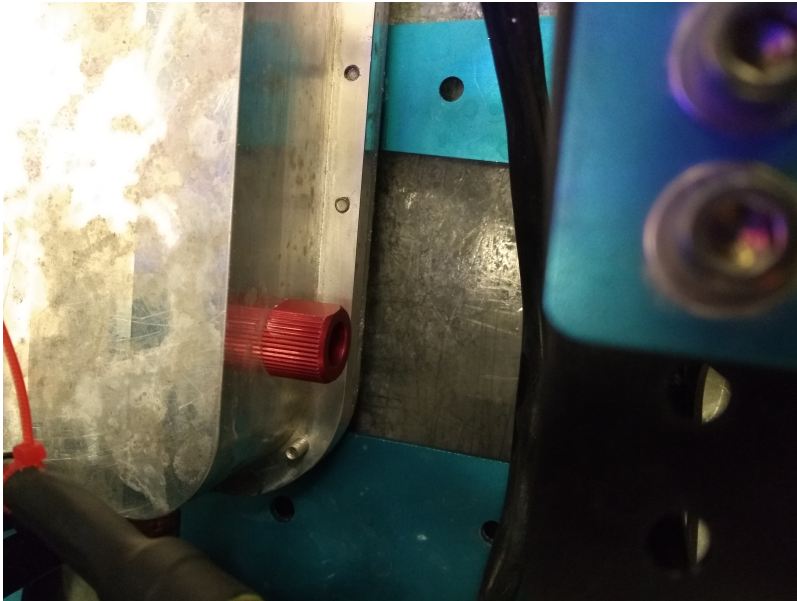


# Battery Charging

This page is **stale** and needs to be reviewed. It may be deleted or radically changed in the near future.

This is how to charge the battery case (the external version).

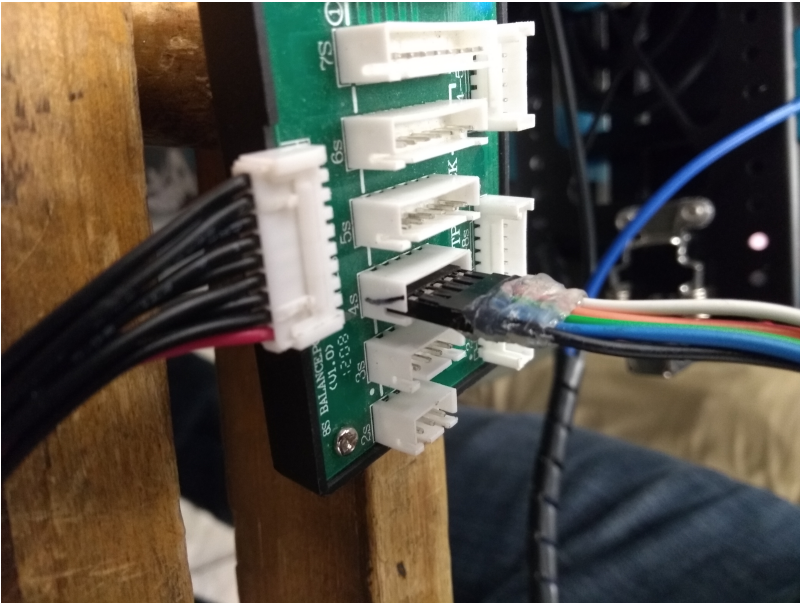
1. Remove the vent plug from the side of the case.



2. Plug the sensing cable into the SeaCon connector on the battery box.



3. Plug the small plastic connector into the 4S slot of the battery status board. Make sure that the black wire goes on the same side as the female end of the connector with the black line.



4. Connect the wire charging cable (the one without the plastic wrapping) into the power connector of the battery box. Connect the red connector to the cable with the red zip tie and the black connector to the black wire.

[PICTURE TO BE UPLOADED SOON]

5. Connect the Anderson connector of the cable to the Anderson connector on Port 1 of the battery charger. Make sure red goes to red and black goes to black.

[PICTURE TO BE UPLOADED SOON]

6. Connect the Anderson connector on the side of the battery box to the Anderson connector on the power supply. Black to black and red to red.





- 7. Plug in the power supply.
- 8. Make sure that the battery charger is in the correct mode. Four cells (4S), LiPo, and charging port 1.
- 9. Hold Enter for about 1 second to start charging. The charger will beep once it starts charging. The screen should look like the image below. Press the '-' button to cycle through the information screens on the charger.



From: <https://robosub.eecs.wsu.edu/wiki/> - Palouse RoboSub Technical Documentation

Permanent link: <https://robosub.eecs.wsu.edu/wiki/ee/battery/start?rev=1517424814>

Last update: 2018/01/31 10:53

